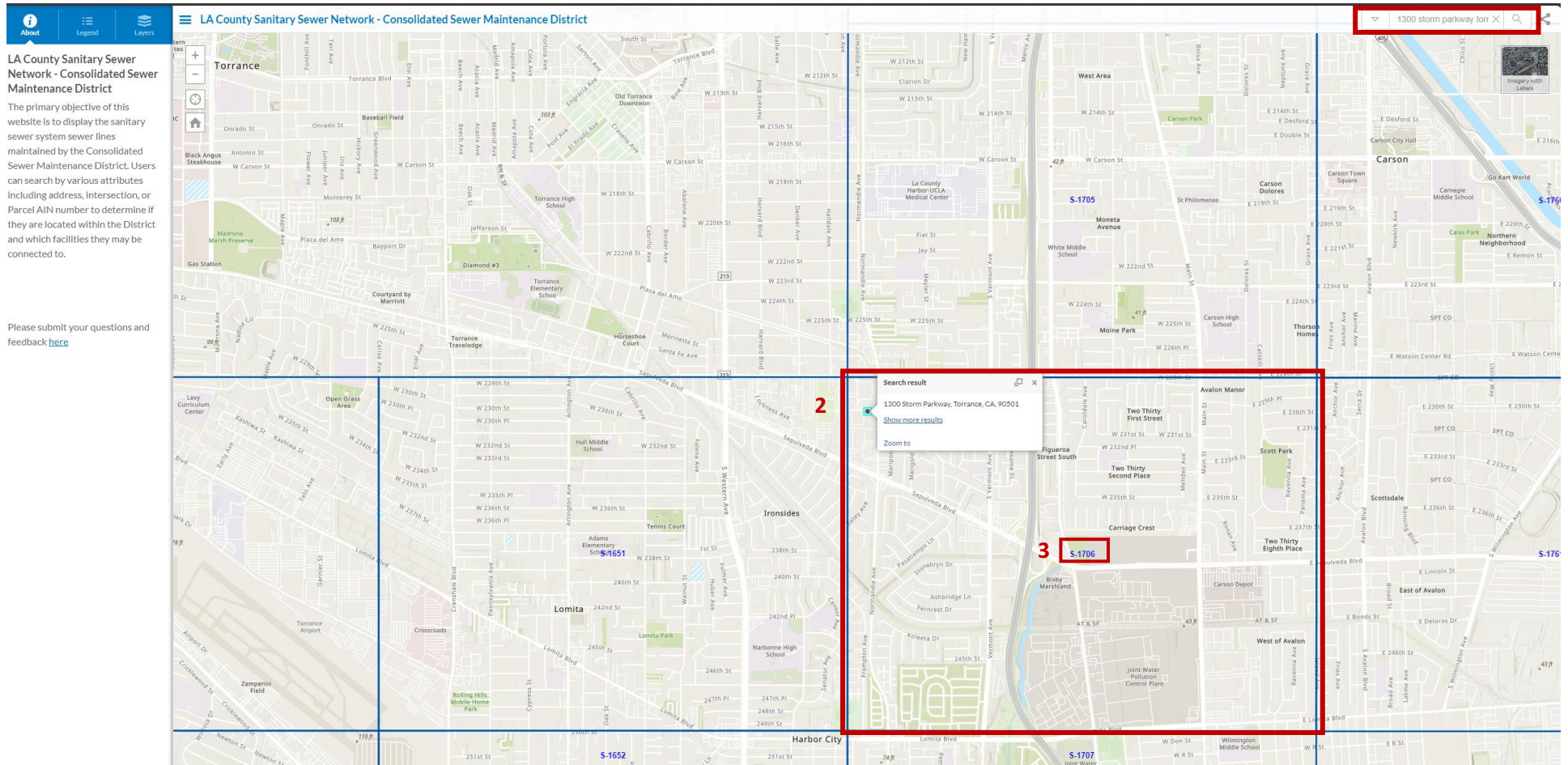
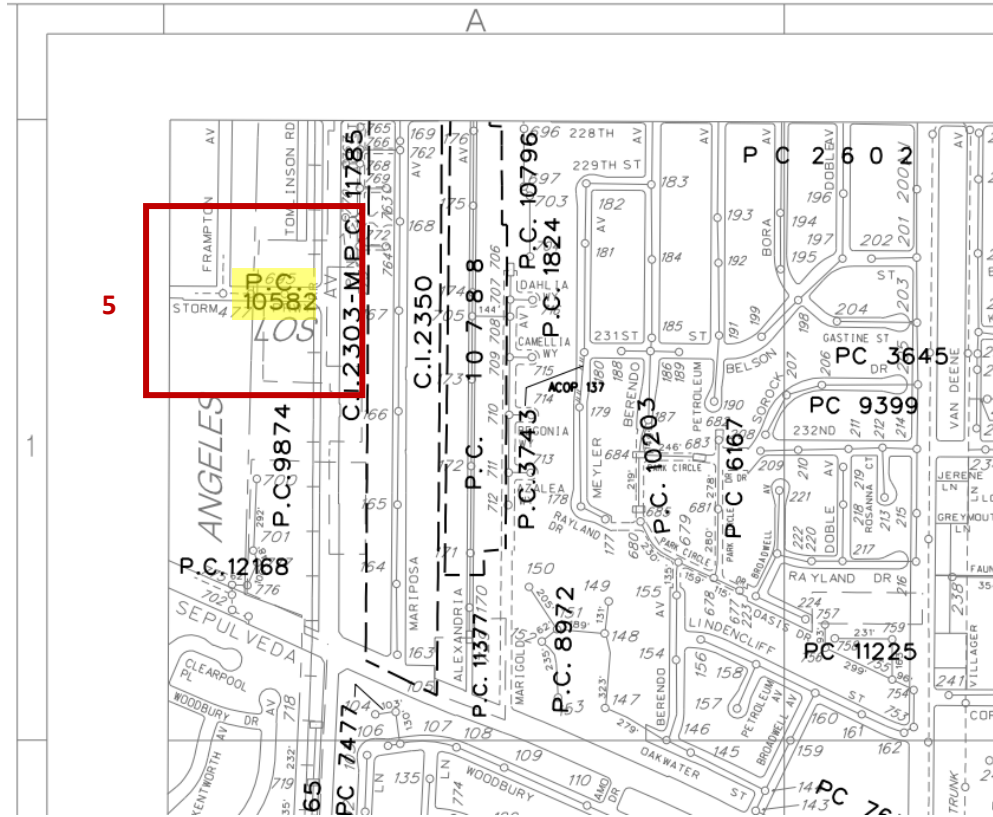
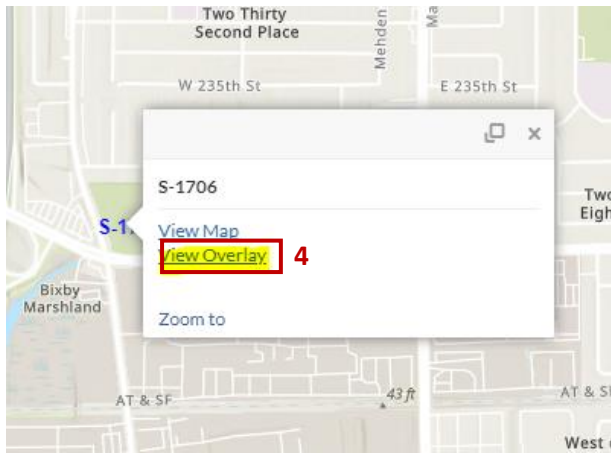


# INSTRUCTIONS ON HOW TO LOCATE AS-BUILT SEWER PLANS

Open this link → [LA County Sewer Network Map](#)

1. Enter property address.
2. Locate the Operations Map.
3. Click on the Operations Map number.





4. Click on View Overlay.
5. The Operations Map will open. Locate the property and the as-built sewer plan number (in this case P.C. 10582).
6. Open this link → [Land Records Information \(lacounty.gov\)](https://landrecords.lacounty.gov)

Land Records Information

- Tract Maps
- Parcel Maps
- Records of Survey
- Misc. Records
- Township Plats/Gov. Notes
- Patent Maps
- Field Books
- Benchmarks
- County Surveyor's Maps
- CEB Maps
- Flood Maps
- Flood RW Maps
- Clark Filed Maps
- Recorders Filed Maps
- LARC Maps
- Official Maps
- Official Record Maps
- Deed Maps
- State Highway MB
- Highway Dedication Maps
- LA County Eng Topo
- County Abstracts
- Substructure Maps
- Sewer Plans
- Design Plans
- LA County Storm Drain
- Industrial Landbase Data
- City Annexations
- USFS Permits
- GIS Data Portal
- Templates and Guides
- Digital Submission RSDCR

Sewer Plans

The sewer plans below are available at this webpage and assistance may be obtained from the contacts below. View the Sewer Operations Maps here to get the sheet that covers your area. Open the overlay sheet for that page and locate the sewer number. Sewers are listed by the number given PC, CI, etc. If you do not find the sewer plan you are looking for, you may need to contact the city that the sewer and property is located within. County contract cities are Carson, Commerce, La Mirada, Lakewood, Lomita, and Temple City.

	7	PC	CI	ACOP	AI	JN	Sec	CC	
Book PC00001			Book PC03500				Book PC05500		Book PC09500
Book PC00500			Book PC04000				Book PC07000		Book PC10000
Book PC01000			Book PC04500				Book PC07500		8 Book PC10500
Book PC01500			Book PC05000				Book PC08000		Book PC11000
Book PC02000			Book PC05500				Book PC08500		Book PC11500
Book PC02500			Book PC06000				Book PC09000		Book PC12000
Book PC03000									

For additional assistance, please contact  
Julie Zhu: 626-300-3311  
Paolo Capilli: 626-642-7249  
Monday-Thursday, 7am-5pm



For issues, questions, or comments about this application, email the administrator.

7. Locate the as-built sewer plan number (P.C. 10582).
8. Click on the Book Number.

Private Contract Table PC10500 to PC10991

To download the images: Select the map number to download from the map table below.

PC10500	PC10555	PC10603	PC10660	PC10729	PC10792	PC10901
PC10503	PC10556	PC10605	PC10661	PC10731	PC10793	PC10902
PC10506	PC10557	PC10606	PC10662	PC10735	PC10794	PC10903
PC10507	PC10558	PC10607	PC10663	PC10738	PC10796	PC10904
PC10508	PC10559	PC10608	PC10664	PC10739	PC10799	PC10906
PC10509	PC10560	PC10609	PC10667	PC10740	PC10803	PC10907
PC10510	PC10562	PC10610	PC10676	PC10743	PC10806	PC10919
PC10513	PC10563	PC10612	PC10678	PC10744	PC10810	PC10923
PC10514	PC10564	PC10613	PC10679	PC10745	PC10814	PC10924
PC10515	PC10565	PC10614	PC10685	PC10748	PC10822	PC10926
PC10517	PC10569	PC10615	PC10686	PC10749	PC10824	PC10928
PC10518	PC10570	PC10619	PC10692	PC10750	PC10826	PC10929
PC10520	PC10571	PC10620	PC10693	PC10751	PC10827	PC10931
PC10521	PC10572	PC10621	PC10694	PC10753	PC10829	PC10932
PC10522	PC10573	PC10622	PC10695	PC10754	PC10837	PC10940
PC10523	PC10575	PC10624	PC10697	PC10755	PC10842	PC10941
PC10524	PC10577	PC10625	PC10701	PC10756	PC10844	PC10942
PC10525	PC10578	PC10626	PC10702	PC10757	PC10845	PC10946
PC10528	PC10579	PC10627	PC10703	PC10759	PC10846	PC10953
PC10530	PC10581	PC10628	PC10704	PC10760	PC10850	PC10955
PC10531	<b>9</b> <span style="border: 1px solid red; padding: 2px;">PC10582</span>	PC10630	PC10706	PC10764	PC10853	PC10956
PC10533	PC10583	PC10631	PC10707	PC10767	PC10856	PC10957
PC10535	PC10585	PC10632	PC10708	PC10768	PC10862	PC10959
PC10536	PC10586	PC10634	PC10709	PC10771	PC10865	PC10960

9. Click on the as-built sewer plan number. This will open the plan.